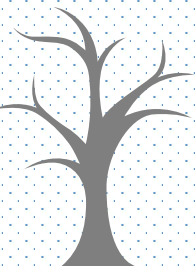
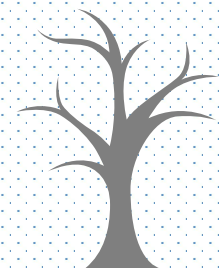
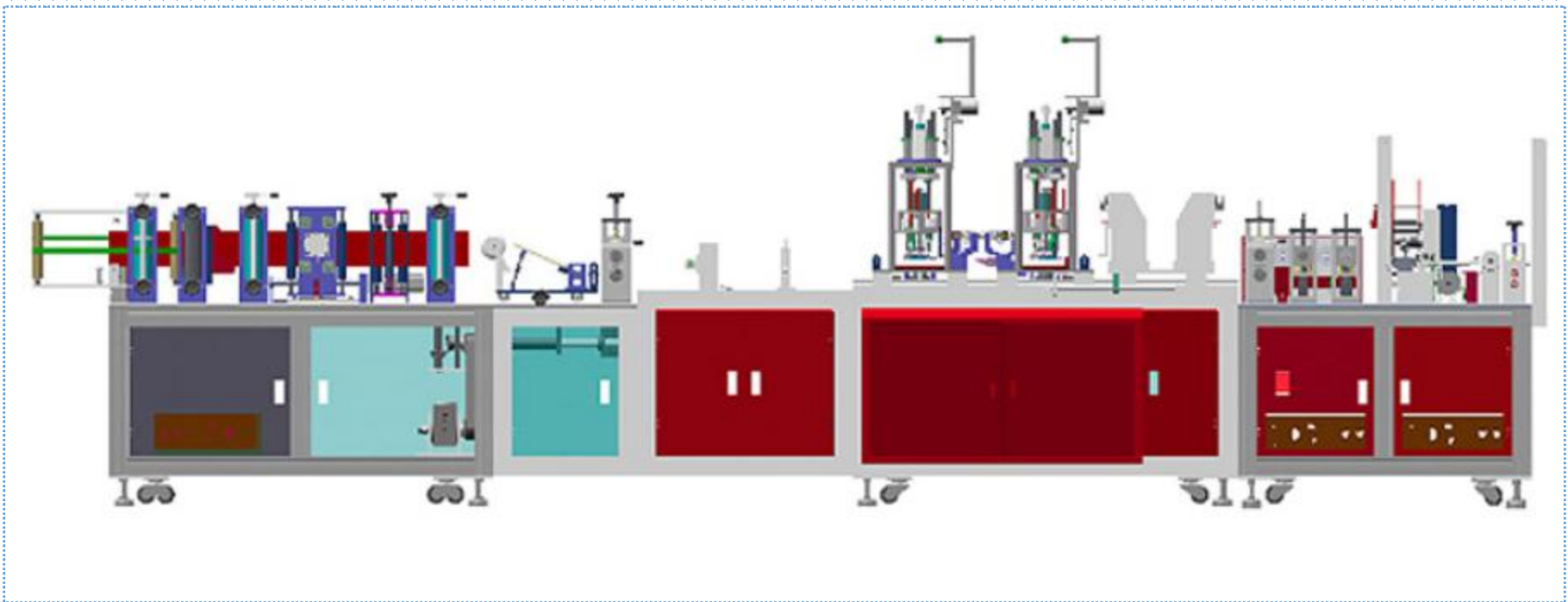


ROBOTIC PAINT GROUP LLC

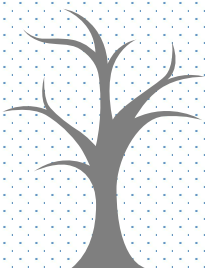
N95 FFP2 Mask Making Machine



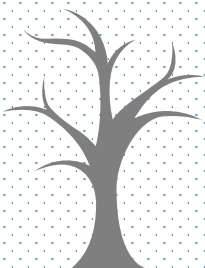
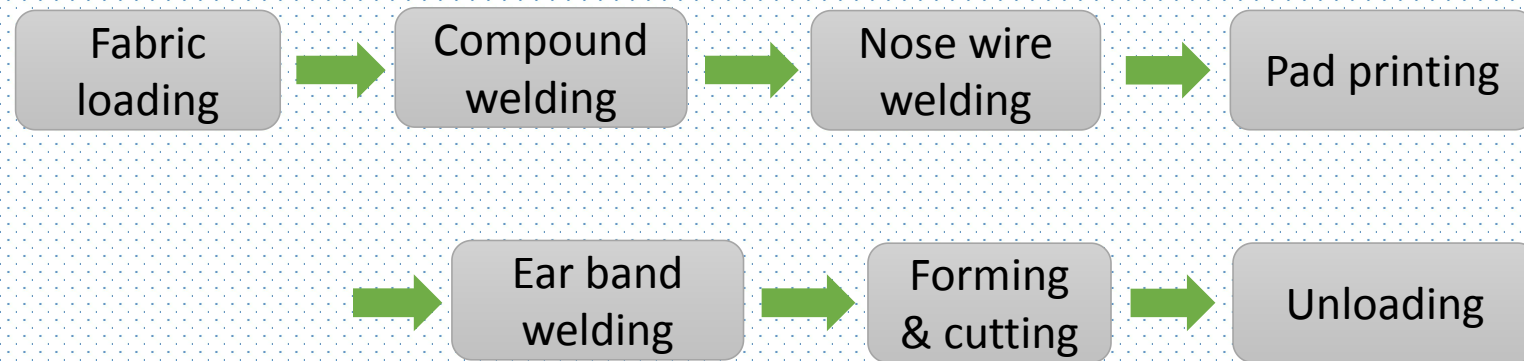


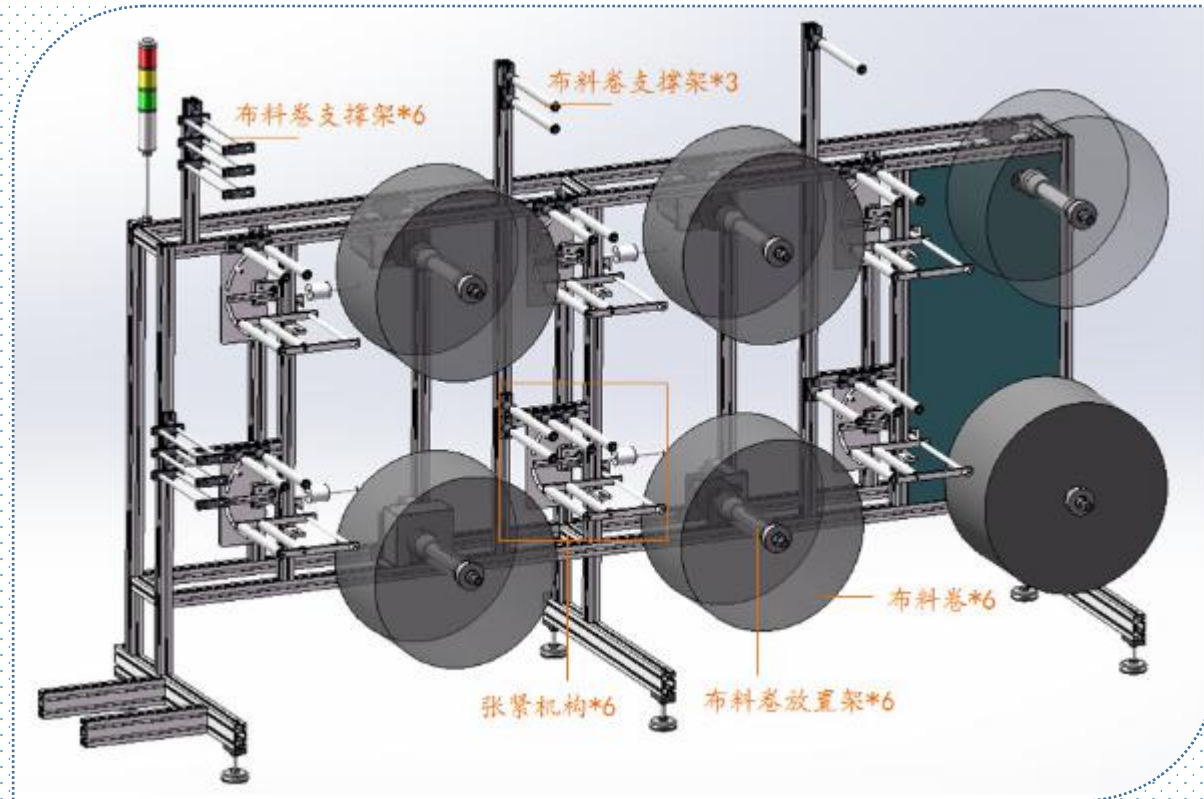
PRODUCTION FLOW

| Name | N95/FFP2 Mask Machine | Dimensions | L9660*W1060*H2120 |
|------------------|-----------------------|-----------------------|---|
| Capacity | 35-45PCS/Min | Air pressure | 6KG/CM ² |
| Machine weight | 1400KG | Material | Alloy aluminum |
| Voltage | 220V /50Hz | Control system | PLC |
| Total power | 11KW | Detector | Electric light sensor |
| Folding Symmetry | +/- 1mm | Operating Environment | temperature 5 ~ 35 °C, humidity 5-35% HR |



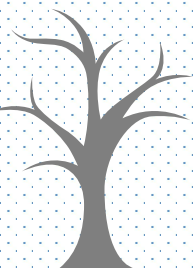
PRODUCTION FLOW

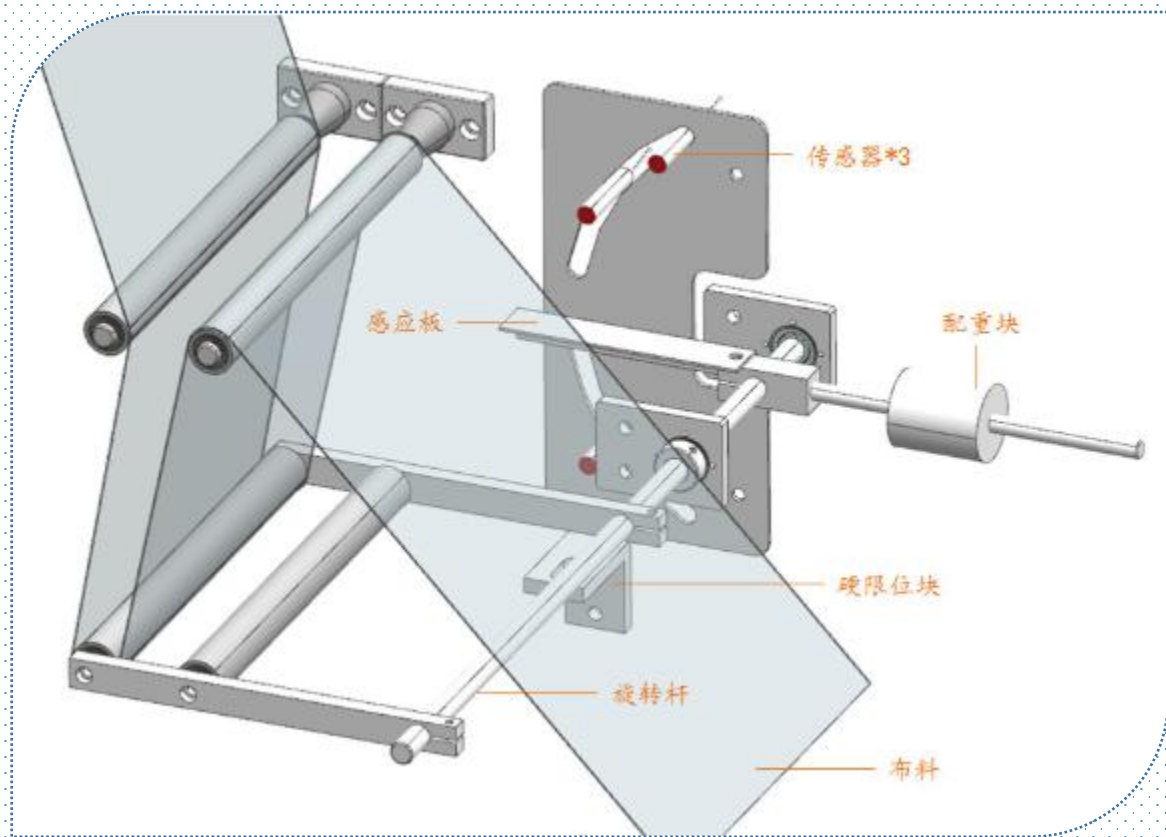




Fabric Loader

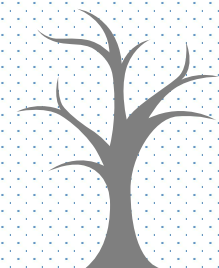
Machine can work with up to 6 layers mask production. Load according to specific requirements.

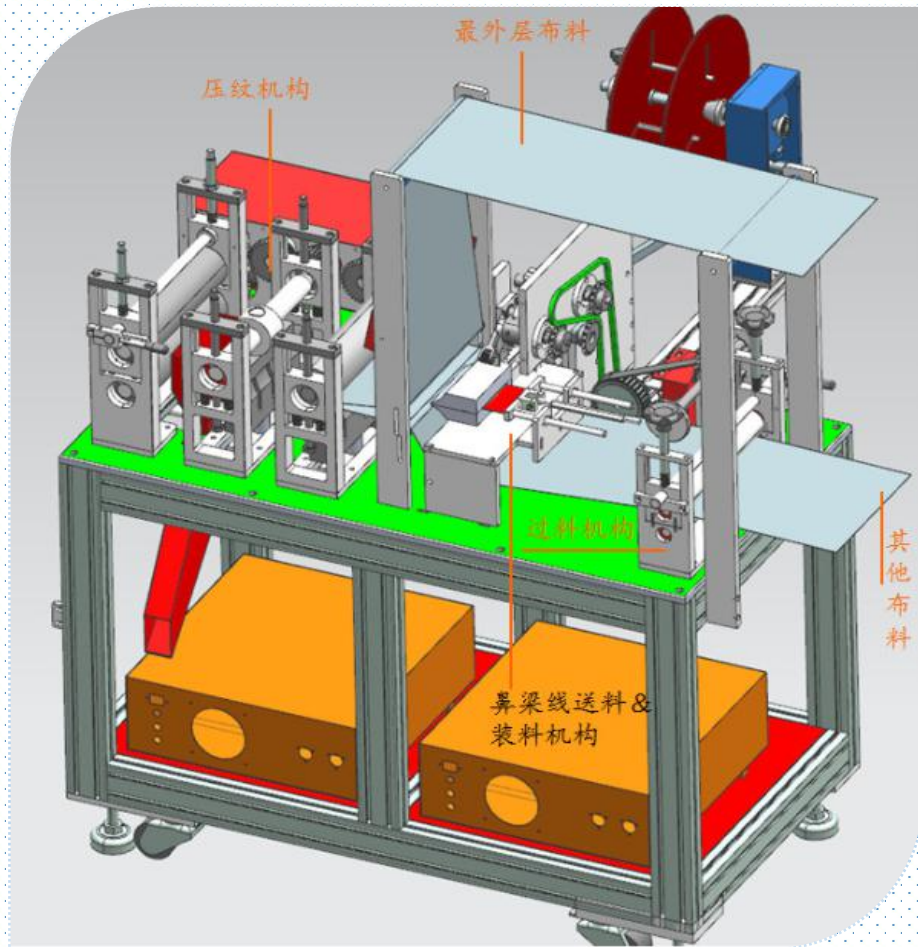




Tensioner

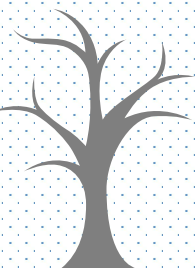
Tensioner provides stable pressure on fabric during operation

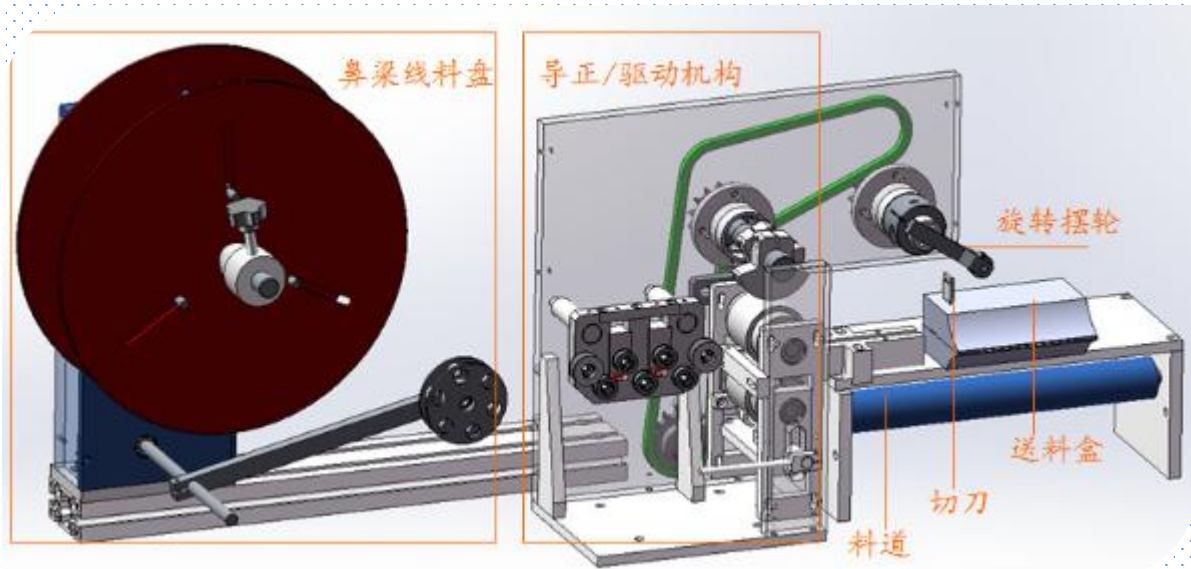




Nose wire & Pressing

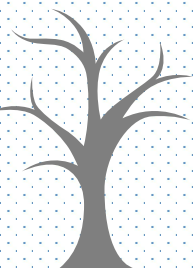
When fabrics entering pressing unit, nose wire is automatically inserted and fixed

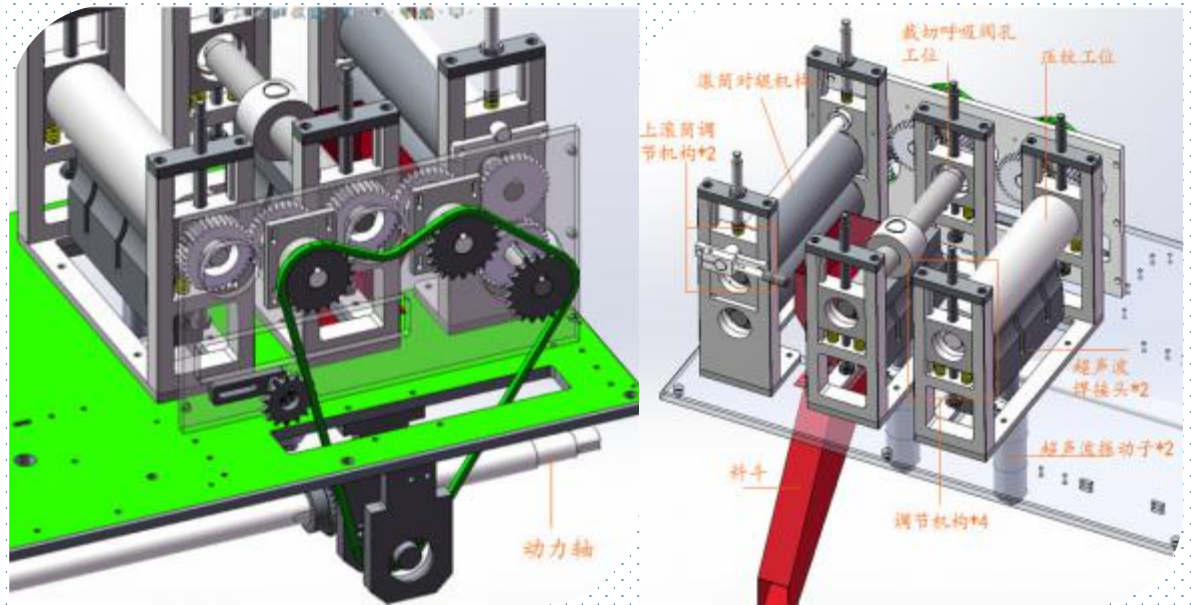




Nose Wire Loader

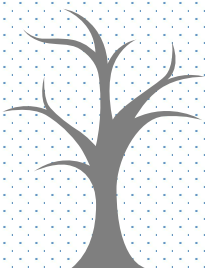
Wire is automatically driven to cutter then inserted into fabric by preset data

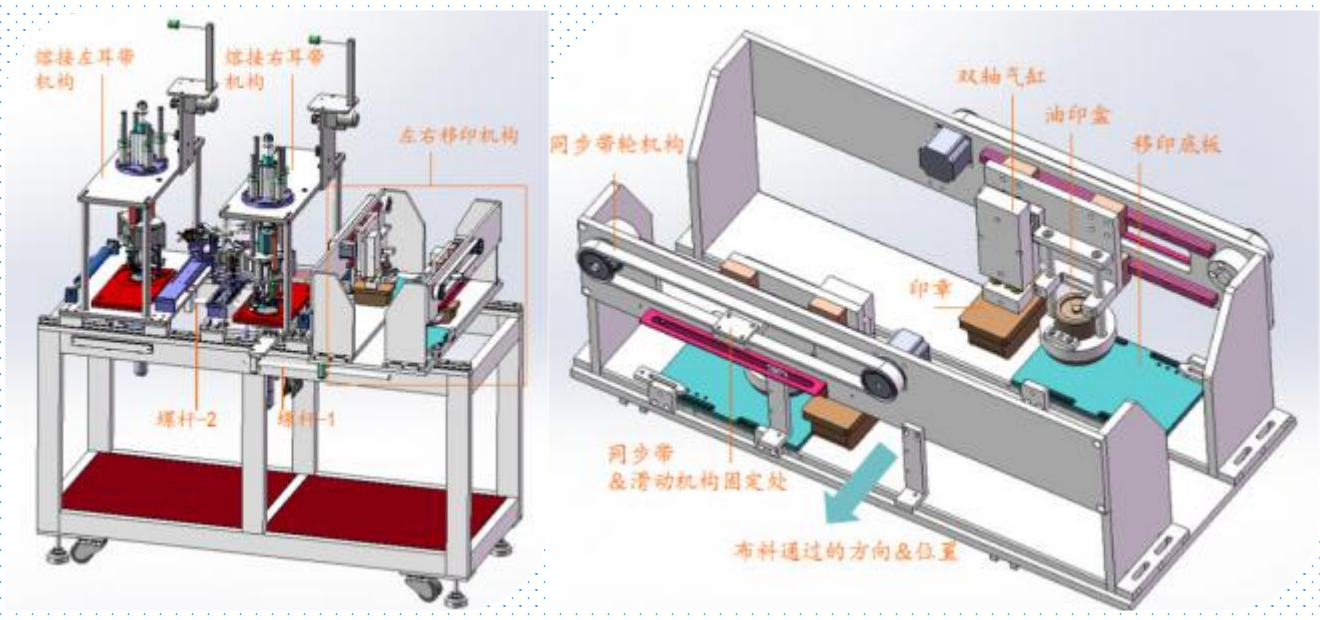




Forming Unit

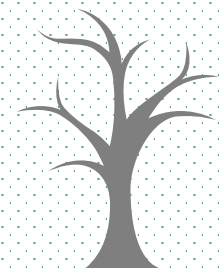
N95 dedicated roller and ultrasonic generator automatically press on fabrics to have mask formed

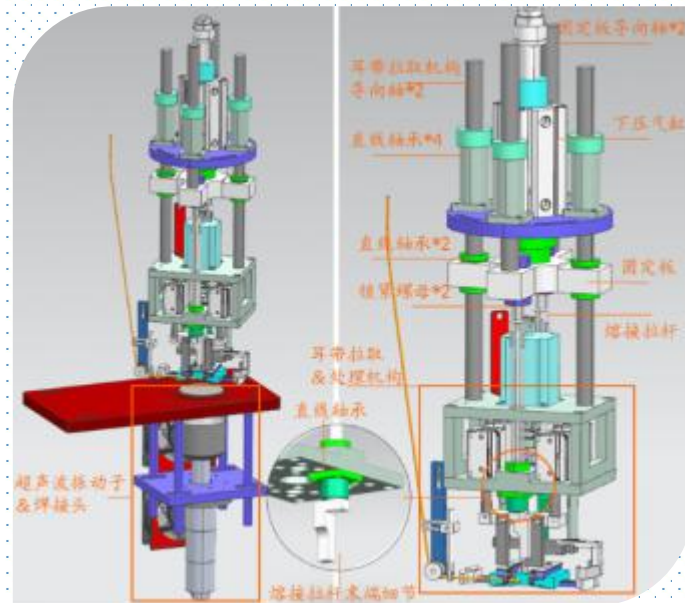
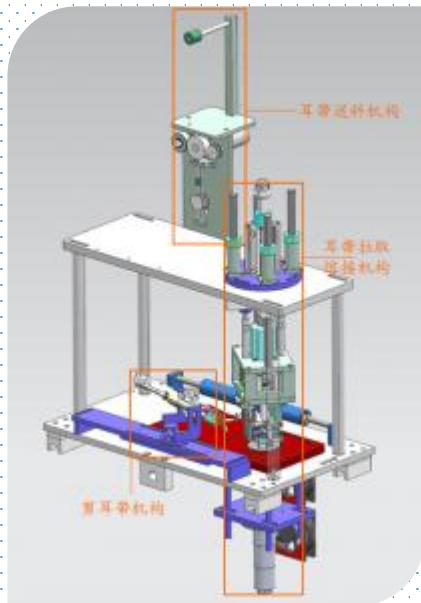




Pad Printing

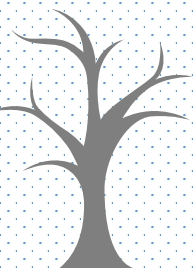
Automatic pad printing on mask

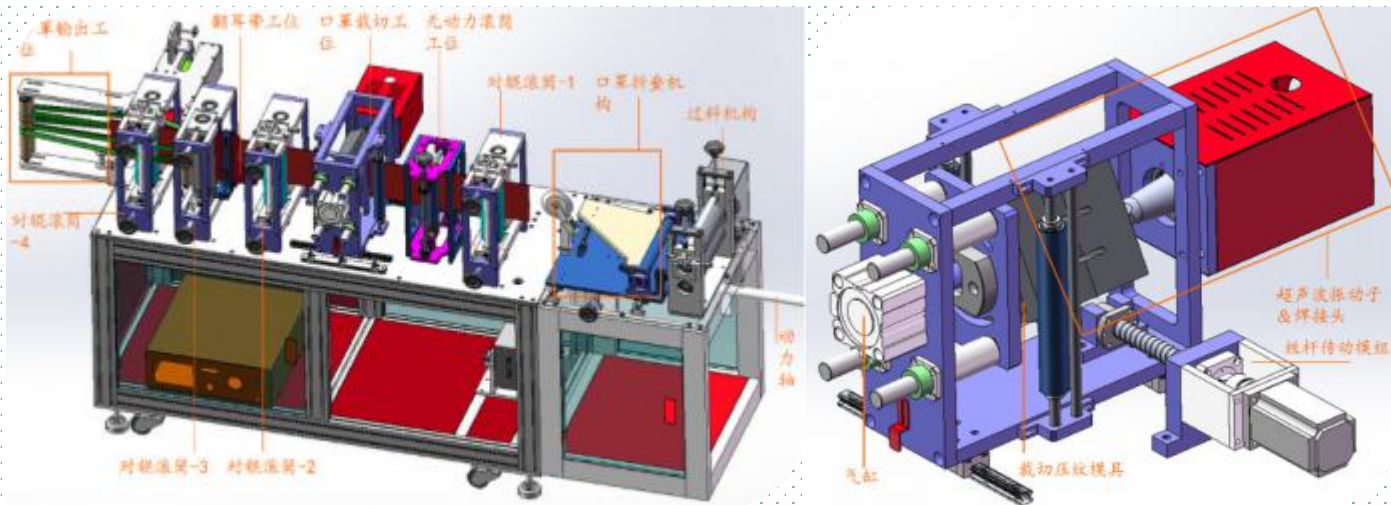




Earband Welding

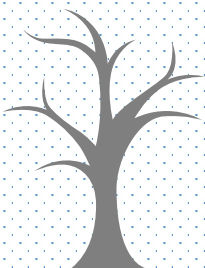
Ear rope is automatically loaded and cut in place, then automatically welded

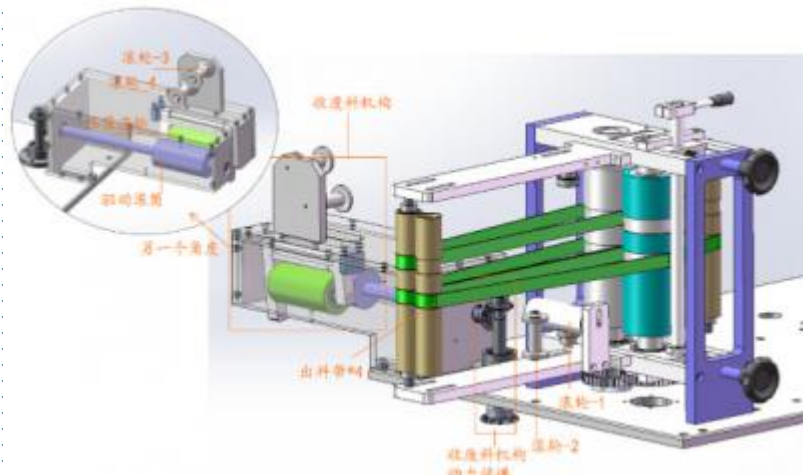




Cutting & Folding

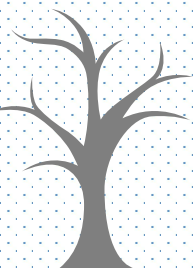
Mask is folded from flat mode then automatically cut for final mask





Output

Mask is automatically dragged out by roller and belt. Mission complete!





THANKS !

- E-mail: Coatingbox@Gmail.com
- Mob/WhatsApp/Wechat: +8613728648614
- Website: <http://roboticpaint.com/>

